

PAGE 3 - 9

UNIFORMS

BAR MANAGER

BARTENDER MALE

BARTENDER FEMALE

BAR WAITER

BAR WAITRESS

POOL DECK UNIFORM MALE

POOL DECK UNIFORM FEMALE

PAGE 10 - 11

NEW UNIFORMS (NOVA - RAY)

BAR WAITER

POOL DECK BAR

BAR DEPARTMENT



Bar Manager



DAY UNIFORM



EVENING UNIFORM

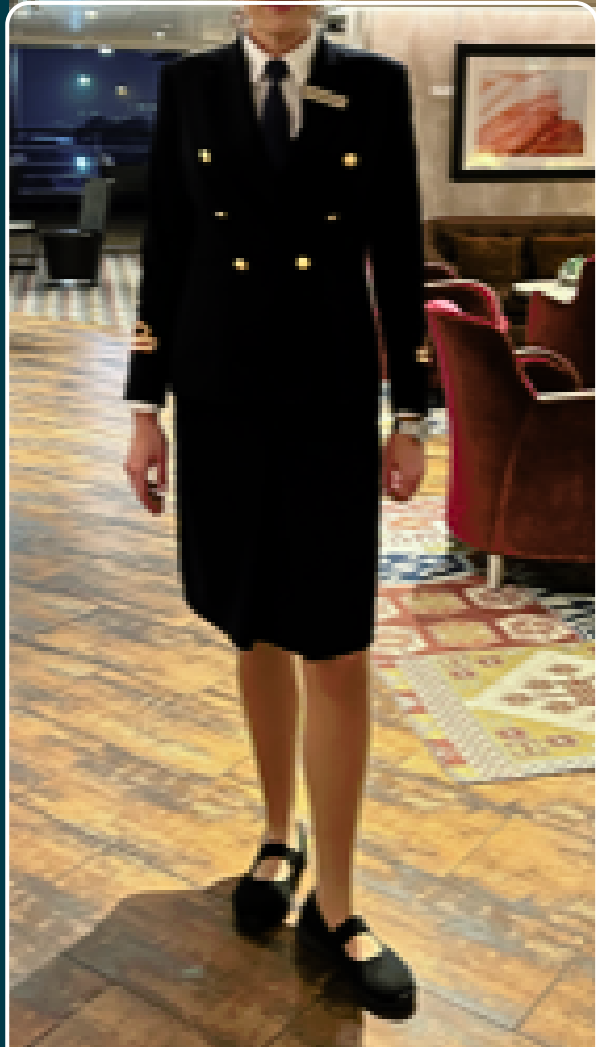
WHAT SHOULD YOU PACK?

BLACK SOCKS (MUST GO OVER THE ANKLE)
BLACK LEATHER, NON-SLIP, LACE UP OXFORD
STYLE SHOES. SHOELACES MUST BE BLACK.

Bar Manager



DAY UNIFORM



EVENING UNIFORM

WHAT SHOULD YOU PACK?

SKIN COLORED STOCKINGS
LEATHER, PLAIN, BLACK, ELEGANT, COMFORTABLE NON-
SLIP SHOES (NO SHINY ACCESSORIES LIKE BOWS &
BUCKLES).

Bartender



MALE UNIFORM

BLACK SOCKS &
WHITE SOCKS
(MUST GO OVER THE ANKLE)

BLACK LEATHER, NON-SLIP,
LACE UP OXFORD STYLE SHOES.
SHOELACES MUST BE BLACK.

PLAIN WHITE TENNIS SHOES
(NO LOGO).



FEMALE UNIFORM

SKIN COLORED STOCKINGS

BLACK & WHITE SOCKS (MUST
GO OVER
THE ANKLE)

LEATHER, PLAIN,
BLACK, ELEGANT,
COMFORTABLE
NON-SLIP SHOES
(NO SHINY ACCESSORIES LIKE
BOWS & BUCKLES).

PLAIN WHITE TENNIS SHOES
(NO LOGO).

Bar Waiter



WHAT SHOULD YOU PACK?

BLACK SOCKS &
WHITE SOCKS
(MUST GO OVER
THE ANKLE)

BLACK LEATHER, NON-SLIP,
LACE UP OXFORD STYLE
SHOES. SHOELACES
MUST BE BLACK.

PLAIN WHITE TENNIS
SHOES (NO LOGO).

PRO TIP!
BRING A WINE OPENER WITH YOU

Bar Waitress



WHAT SHOULD YOU PACK?

SKIN COLORED STOCKINGS

BLACK & WHITE SOCKS
(MUST GO OVER THE ANKLE)

LEATHER, PLAIN, BLACK, ELEGANT, COMFORTABLE NON-SLIP SHOES (NO SHINY ACCESSORIES LIKE BOWS & BUCKLES).

PLAIN WHITE TENNIS SHOES (NO LOGO).

PRO TIP!

BRING A WINE OPENER WITH YOU

Pool Deck Uniform



BAR WAITER



DECK
STEWARD



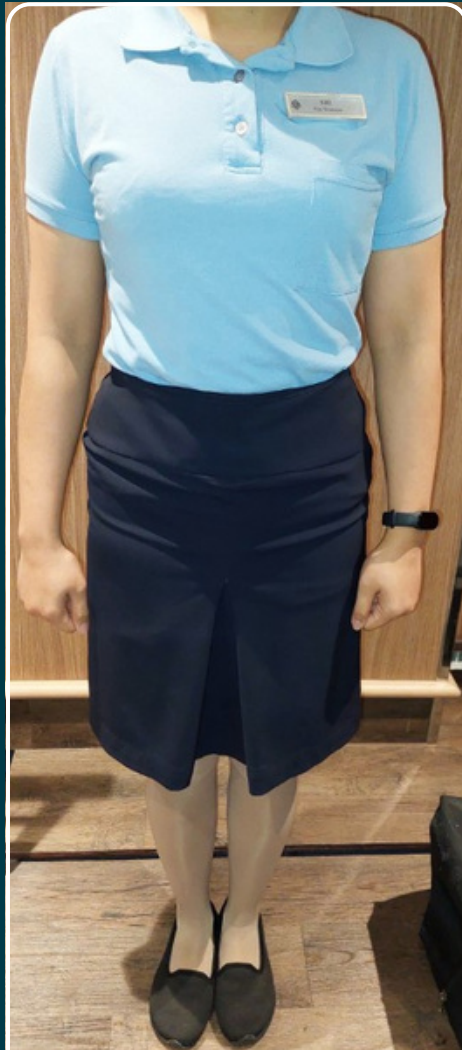
EVENING
UNIFORM

WHAT SHOULD YOU PACK?

BLACK SOCKS & WHITE SOCKS
(MUST GO OVER THE ANKLE)
BLACK LEATHER, NON-SLIP, LACE UP OXFORD
STYLE SHOES. SHOELACES MUST BE BLACK.
PLAIN WHITE TENNIS SHOES (NO LOGO).

PRO TIP!
BRING A WINE OPENER WITH YOU

Pool Deck Uniform



BAR WAITRESS
SKIRT
UNIFORM



BAR WAITRESS
PANTS
UNIFORM

WHAT SHOULD YOU PACK?

SKIN COLORED STOCKINGS
BLACK & WHITE SOCKS (MUST GO OVER THE ANKLE)
LEATHER, PLAIN, BLACK, ELEGANT,
COMFORTABLE NON-SLIP SHOES
(NO SHINY ACCESSORIES LIKE BOWS & BUCKLES).
PLAIN WHITE TENNIS SHOES (NO LOGO).

PRO TIP!

BRING A WINE OPENER WITH YOU

Bar Waiter



WHAT SHOULD YOU PACK?

BLACK SOCKS &
WHITE SOCKS
(MUST GO OVER
THE ANKLE)

BLACK LEATHER, NON-SLIP,
LACE UP OXFORD STYLE
SHOES. SHOELACES
MUST BE BLACK.

PLAIN WHITE TENNIS
SHOES (NO LOGO).

PRO TIP!

BRING A WINE OPENER WITH YOU

Pool Deck Uniform



WHAT SHOULD YOU PACK?

BLACK SOCKS &
WHITE SOCKS
(MUST GO OVER
THE ANKLE)

BLACK LEATHER, NON-SLIP,
LACE UP OXFORD STYLE
SHOES. SHOELACES
MUST BE BLACK.

PLAIN WHITE TENNIS
SHOES (NO LOGO).

PRO TIP!

BRING A WINE OPENER WITH YOU